



Atempo Digital Archive and Spectra Logic Storage Solutions

Solving the growing problem of managing storage resources while ensuring long-term preservation of digital information has become a major challenge for organizations around the globe. Some companies have stored data using an infinite retention period in an attempt to preserve data over the long-term. However, this approach leaves finished projects and other fixed content data on primary storage, significantly degrading performance. Further, the backup application then manages so much information that its performance begins to degrade as well. The result: impossibly long data searches, poor performance of primary and backup systems, and backup windows not being met. Finding the right archive and storage tools and implementing an efficient workflow has become a high profile task for a lot of IT groups seeking to conserve the business critical data, the life blood of their enterprises, while controlling storage costs and utilization.

The Joint Solution

Atempo and Spectra Logic have partnered to offer a ready-to-use tiered storage solution that improves information workflow and long-term data management. Users simply set the policies, and the data automatically moves to dedicated, cost effective, long-term disk and tape storage media.

The combined solution enables organizations to:

- ⦿ Optimize storage costs
- ⦿ Centrally manage long term archives
- ⦿ Reduce backup windows
- ⦿ Enhance performance of the primary storage and the backup software
- ⦿ Implement tiered storage policies using systems that can be scaled over the long-term

The solution is comprised of Atempo Digital Archive (ADA) software, Spectra nTier disk appliances and Spectra tape libraries. ADA automatically migrates file-based data from primary storage to Spectra disk or Spectra tape storage—or to both. The data migration is triggered either by site-specific policies or initiated directly by the end users who want to preserve files for the long term without waiting for a policy to take effect.



Key Features & Benefits

Archive Digital Information Stored on Any Primary Server

ADA software and Spectra library and disk are platform-agnostic and can archive data from any primary storage server including Windows, Mac, Linux, UNIX and NAS file servers. This combination enables customers to setup a unique archive solution compatible with most, if not all, of the servers in their environment.

Automatic Movement of the Data from Primary to Long-term Storage

By basing archive policies on specific criteria appropriate for the site's data, the administrator of the system can be sure that the information will be automatically migrated to the Spectra disk appliances and the Spectra tape libraries. This frees valuable space on their primary servers and improves primary server performance.

End-user Driven Archive

Along with automatically archiving data, end-users can also archive data on the fly using a dedicated GUI. As soon as a project completes, the customer can copy data to disk, tape, or both. The finished work is immediately secured.

Central Administration

The ADA centralized, intuitive console lets users easily configure archiving rules and assign user access privileges. Administrators can decide which data set is to be archived onto Spectra libraries, such as the Spectra T50e digital archive, the Spectra nTier disk appliances or both simultaneously. This combination provides maximum flexibility in managing storage resources.

Multiple Search Capabilities

ADA features multiple search capabilities and offers multiple options to retrieve archived information. Users can:

- Search meta-data, using either the end-user or the administration console
- Retrieve data using stubs left in the primary systems
- Search for data granularly using the full content indexing and search tool

Tiered Storage Solution

Not all data should be retained for an infinite number of years, and some data may be accessed much sooner than others. That's why the Atempo and Spectra Logic joint solution features two tiers of storage for the information, depending on retention and access requirements. This flexibility enables the administrator to optimize storage resources.

Secure Long-term Storage

The Spectra nTier disk appliances and T-series tape libraries are completely secure systems. The nTier disk appliances line offers RAID 6 double parity disk arrays, and the T-series tape libraries offer integrated encryption and key management capabilities to secure data stored on tape.

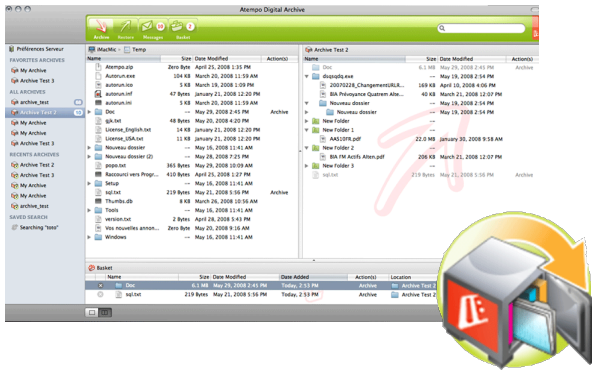
Scalability & Performance

Built on a robust and proven platform, ADA offers tremendous scalability. With this solution, thousands of users can perform ad hoc archival and organizations can seamlessly manage terabytes of archived information for long periods of time. In order to ensure optimum performance, ADA continuously monitors the archive activity and sends alarms in case of an issue. Finally, it offers file-level deduplication capability to eliminate redundant files on the secondary storage and help save storage space.

Scaling nTier700 appliances is fast, because the additional capacity arrives pre-configured in RAID 6 sets so they can slide into the nTier appliance and immediately be put into production. Spectra tape libraries can scale from 10 slots up to thousands of slots through the library's unique TranScaling architecture that preserves initial investments by simple interchangeability. Simply move components to the next larger chassis. Adding performance and capacity are straightforward—it's easy to access additional slots within a library that isn't yet filled to capacity. Adding drives is also straightforward—drives install in minutes.

Atempo Digital Archive

Atempo Digital Archive is an open archive software solution with automatic end-user, and workflow-triggered archiving. Atempo Digital Archive migrates content from primary storage to near-line and deep archives, whether it is digital tape or disk. Unlike HSM-only solutions, Atempo Digital Archive provides rich search and retrieval capabilities – from drag and drop UI to stub files to metadata or full content search.



About Atempo

Atempo enables organizations to protect, manage, archive, and recover digital information simply and effectively, across any infrastructure, on any platform, over any period of time. Atempo's portfolio of integrated software solutions simplifies the management of data throughout its entire lifecycle. Atempo serves thousands of customers around the world through a sales and support network of over 200 resellers and partners.

Learn more at www.atempo.com

Spectra nTier Appliances

The flexible nTier backup and archive appliance lets users decide how it can best meet storage needs. Users can set up the appliance to protect the valuable information on Windows servers, or to stage data for quick disk-based recovery. What's more, the nTier appliance is easily managed with the graphical BlueScale interface – icon-driven with guided configuration, just like the BlueScale interface that runs Spectra T-Series tape libraries.



About Spectra Logic Corporation

At Spectra Logic we define, design and deliver innovative data protection through tape, deduplication and disk-based backup, recovery and archive storage solutions. By igniting innovation we challenge expectations of the data protection market with intelligent, integrated, and simple to use backup and archive technologies. Throughout our 30-year history we have delivered high-density, feature rich storage with unmatched service and support to customers worldwide. Our customers include NASA, Argonne National Labs, GMAC, Exempla Healthcare, The US Army, National Geographic Global Media, Sky TV and the New England Sports Network (NESN).

Learn more at www.spectralogic.com

Spectra T-series Tape Library

By combining field-proven reliability with cutting-edge storage innovation, the Spectra® T-series libraries provide enterprise capabilities in a wide range of capacity/performance models. The T-series family offers advanced LTO technology, powerful library management functionality, increased security through integrated BlueScale® Encryption, plus a wide range of support options. With innovative features found across all T-series libraries, the T50e is easily TranScaled to a larger T-series library to support long-term data growth.

